



GAT MONTHLY MEMBERSHIP PROGRESS REPORT

Results as of: 4/30/2022

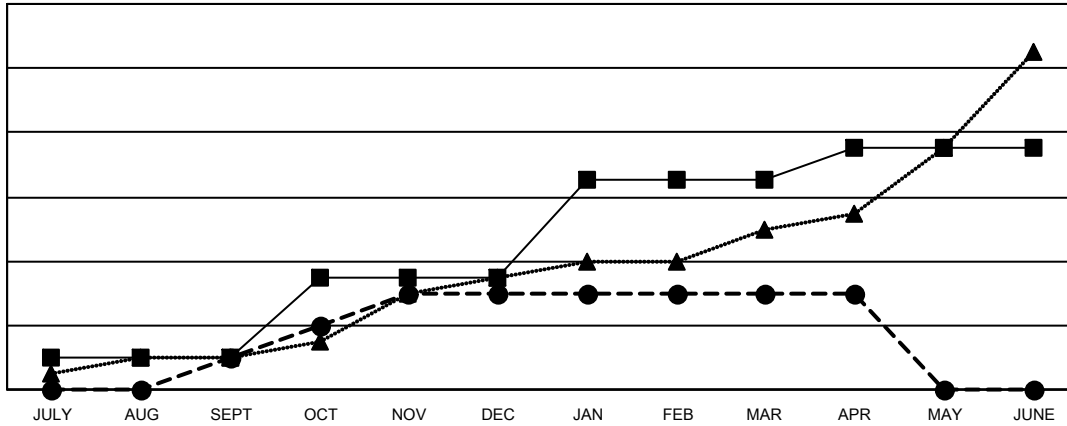
Multiple District A

LOCATION: ONTARIO

Clubs			
RESULTS FOR 2021-2022			
QUARTER	NEW CLUB GOAL	NEW CLUBS	DROPPED CLUBS
JULY/AUG/SEPT	2	2	3
OCT/NOV/DEC	5	4	2
JAN/FEB/MAR	6	0	3
APR/MAY/JUNE	2	0	0

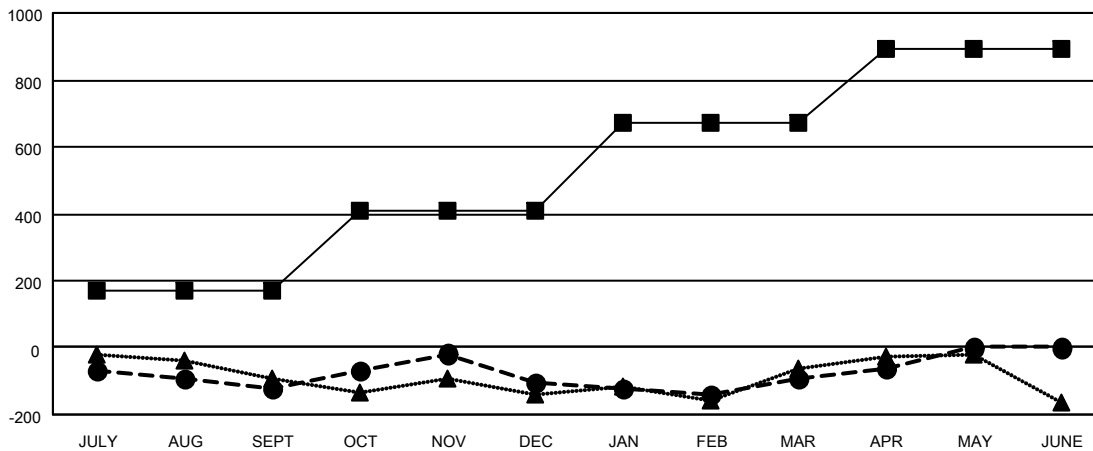
Members			
RESULTS FOR 2021-2022			
QUARTER	MEMBER GROWTH NET GOAL	MEMBER GROWTH ACTUAL	DROPPED MEMBERS ACTUAL (including transfers)
JULY/AUG/SEPT	170	256	333
OCT/NOV/DEC	240	484	421
JAN/FEB/MAR	260	331	275
APR/MAY/JUNE	225	117	84

GOALS AND ACTUAL NEW CLUBS CUMULATIVE



- - CURRENT YEAR GOALS FOR NEW CLUBS
- - CURRENT YEAR ACTUAL NEW CLUBS
- ▲ - LAST YEAR ACTUAL NEW CLUBS

GOALS AND ACTUAL MEMBERS CUMULATIVE



- - MEMBER GROWTH NET GOAL
- - MEMBER GROWTH ACTUAL
- ▲ - LAST YEAR MEMBERSHIP ACTUAL

DROPPED CLUBS: 8	266 CLUBS OF 539 ADDED 1 OR MORE NEW MEMBERS	GENDER DISTRIBUTION
DROPPED MEMBERS	CLICK HERE FOR CUMULATIVE MEMBERSHIP DATA	MALE 8,107 (66.03%)
DECEASED 177		FEMALE 4,169 (33.96%)
CLUB CANCELLED 38		NON BINARY 0 (0.00%)
OTHER 899		PREFER NOT TO ANSWER 1 (0.01%)
TOTAL 1,114		TOTAL FAMILY UNIT MEMBERS 2,265
		FAMILY MEMBERS PAYING HALF DUES 1,171